



## Rookes Crescent

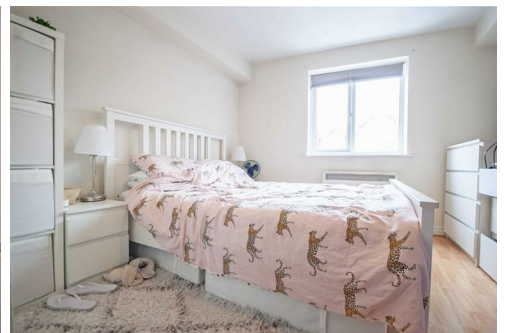
Chelmsford, CM1 3GN

Leasehold  
Tax Band: C

**£235,000**



Boasting an EXTENDED LEASE and the benefit of an EN SUITE, plus TWO DOUBLE BEDROOMS is this spacious first floor apartment located within walking distance to Chelmsford's mainline station. Offered for sale with NO ONWARD CHAIN and further comprising of; a SPACIOUS LOUNGE DINER, fitted kitchen, entrance hall, fitted bathroom and PRIVATE PARKING for residents. Ideal as a first time buy, for commuters or buy to let!



# Rookes Crescent, Chelmsford, CM1 3GN

## Communal Entrance:

Secure private telephone entry system only serving one other property, stairs to first floor, entrance door to flat.

Years Remaining: 189

Service Charge: £1489 Per Annum

Ground Rent: £125 Per Annum

## Entrance Hall:

Double glazed window to rear, doors to lounge, bedroom one, bedroom two, bathroom.

## Lounge:

14'6" > 12' x 13'10" (4.42m > 3.66m x 4.22m)

Double glazed window to front, double glazed french doors to Juliet balcony, storage heater, door to kitchen, wood effect flooring.

## Kitchen:

9'3" x 8'6" (2.82m x 2.59m)

Double glazed window to front, range of wall and base units, rolled edge work surfaces with stainless steel sink inset, integrated low level oven, electric hob, space for fridge freezer, washing machine, part tiled walls.

## Bedroom One:

16'5" > 9'6" x 10'4" (5.00m > 2.90m x 3.15m)

Double glazed window to front, door to en-suite, storage heater, wood effect flooring.

## En-Suite:

Fully tiled shower cubicle, wall mounted hand wash basin, low level W/C, part tiled walls.

## Bedroom Two:

10'7" x 8'3" (3.23m x 2.51m)

Double glazed window to rear, storage heater.

## Bathroom:

7'3" x 5'6" (2.21m x 1.68m)

Panel bath, wall mounted hand wash basin, low level W/C, part tiled walls, tiled flooring.

## Agent Notes:

Council Tax Band: C

## Leasehold Information:



At Hamilton Piers we aim to ensure our particulars are accurate and reliable. However, they do not constitute any offer or contract, nor are they to be taken as statements or representations of fact. No tests have been carried out by us in respect of services, systems or appliances contained in the specification and no guarantee as to their operating ability or efficiency is given (unless stated otherwise).

All measurements are a guide only and, therefore, can be approximated in some cases. If purchasing, fixtures and fittings, apart from those mentioned in the particulars, are to be agreed with the seller. Some particulars, please note, may also be awaiting the seller's approval. If clarification or further information is required, please contact us.

AWARD WINNING SALES AND LETTINGS ACROSS ESSEX

01376 341 141 | 01245 269 777 | 01621 212 450 | 01371 809 500 | 0207 079 1510

